

## STUDENT HANDOUT: ANALYSING A LITERARY WORK

### SETTING

what are the three setting elements in the story?  
Time, place, situation/social climate

How important is the setting?  
To what extent is it described?

### POINT OF VIEW

From whose point of view is the story told?  
Does the point of view change?

What is the relationship between point of view  
and the writer's purpose?

### WRITER'S PURPOSE

To entertain? Amuse? Frighten? Challenge?  
Instruct? Question? Reveal?

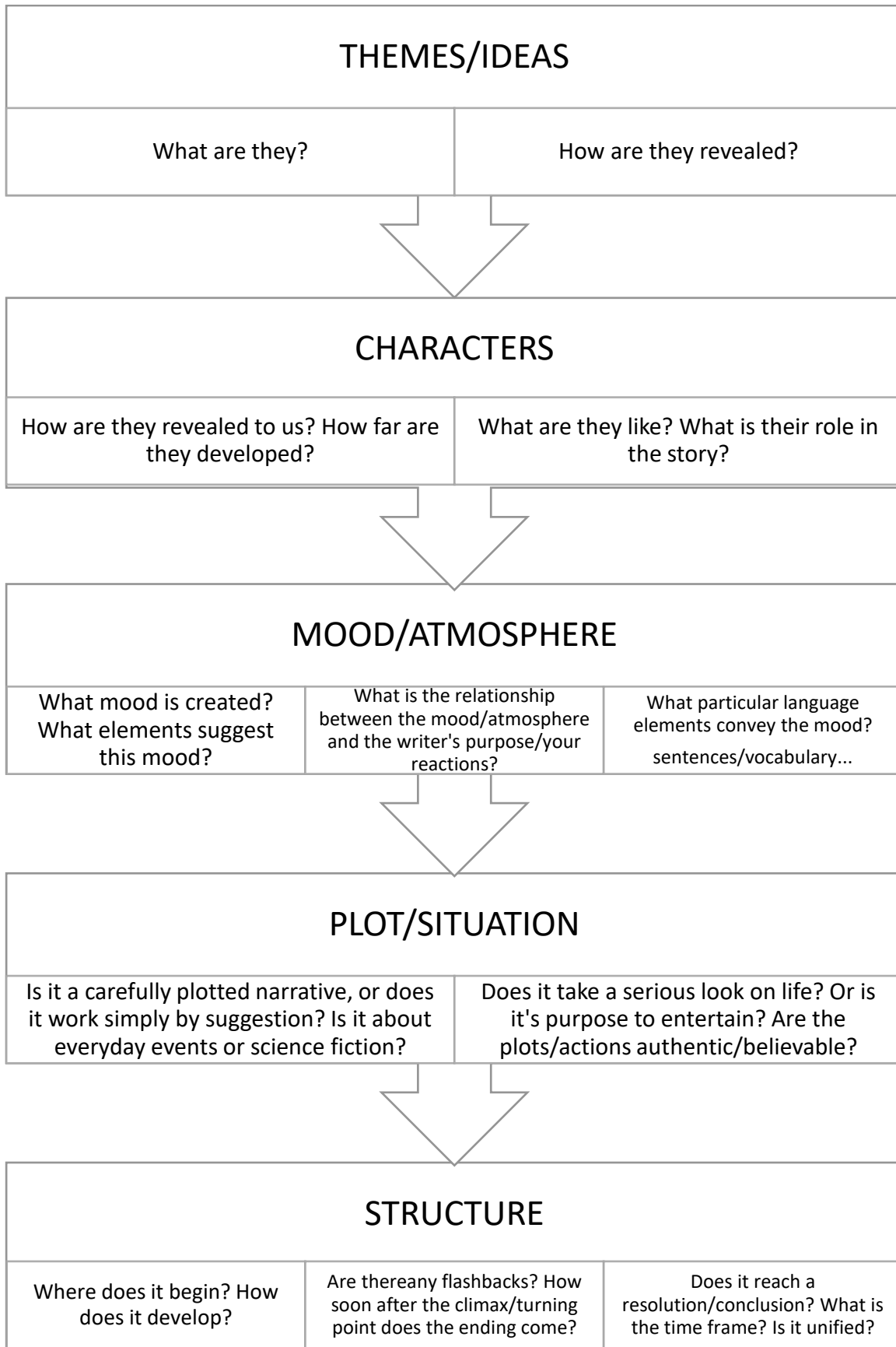
Is it the writer's purpose that will shape all the  
other elements of the story?

### STYLE

All the elements of the story make up the style, but to be more specific, look at the types of sentences, choice of words, imagery, symbols. Note how they work together to create the tone of the story.

### TITLE

What information about the story do we get from the title?





SENDISS  
Access-Achieve-Empower